

XC-101 Life Size Human Skeleton (180 cm) tall on a pelvic mounted stand

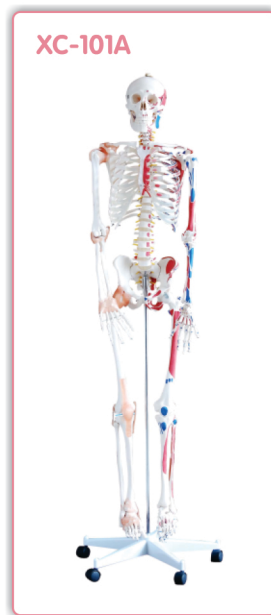


This economical, life size adult plastic skeleton is ideal for teaching the basics of human anatomy. Its arms and legs are removable for study. Features nerve branches, vertebral artery and herniated lumbar disc. Skull includes movable jaw, cut calvarium, suture lines and three removable lower teeth. Mounted on a sturdy 16" wide plastic base, washable, unbreakable PVC plastic.

XC-101A Life Size Human Skeleton (180 cm) with Muscles & Ligaments on pelvic mounted stand

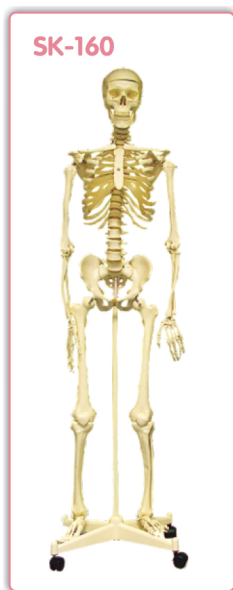
The skeleton allows you to demonstrate the hand painted muscles origins & Flexible joints ligaments.

This skeleton is Made of Durable & Unbreakable plastic which includes Stand & Dust cover.



SK-160 Deluxe Life Size Human Skeleton with stand

This human skeleton model has been standard anatomical skeleton model of quality for schools, medical colleges, universities, nursing training institutes, laboratories & hospitals for over a decade.



XC-102B Medium Skeleton with Nerves and Blood Vessels

This model depicts the position, course and distribution of main arteries and peripheral nerves of the human body. It may be employed as a visual aid in the instruction of anatomy to students of medicine. This model is made of PVC material.



SK-046 Mini Skeleton with Stand

- ◆ Real life model
- ◆ Durable Parts
- ◆ ABS Stand

